



HEATERS



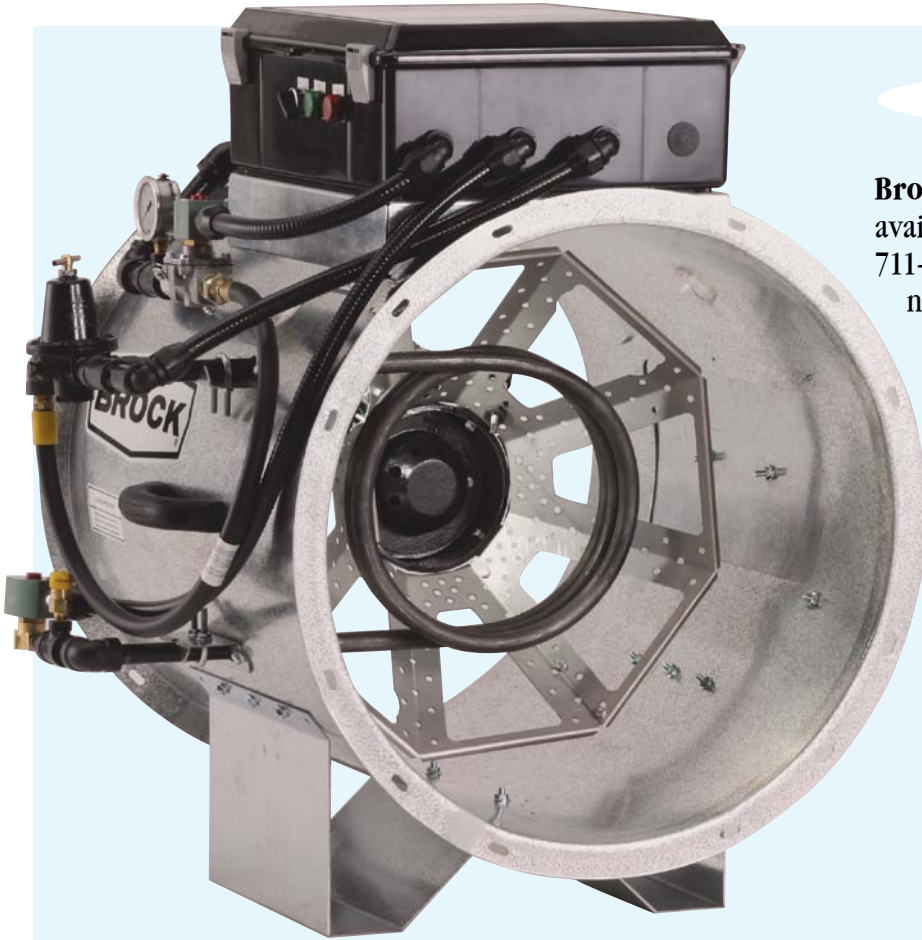
SM



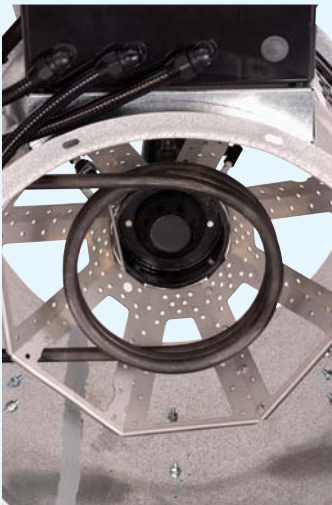
GUARDIAN® SERIES: EFFICI

AXIAL HEATERS

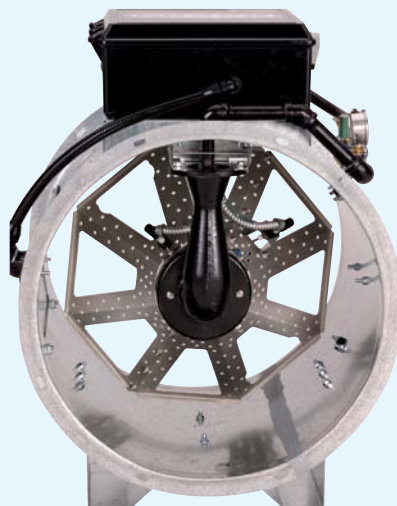
Brock's GUARDIAN® Series Axial Heaters are available in 24-, 26-, and 28-inch (610-, 660-, and 711-mm) diameters to match your grain conditioning needs. Low temperature heaters are also available.



Heater models are available for use with liquid propane, propane vapor, or natural gas fuels and utilize gas-certified solenoid valves. Brock-supplied regulators are standard on liquid propane models.



Liquid propane heater models include a **high-capacity internal vaporizer**. Stainless steel **cone** is standard.



Rodent-resistant conduit protects all exposed wiring, including ignition and flame circuit wires in the burner unit.



Brock's heaters feature a large **service access door**. Convenient **sight ports** on both sides of the heater unit make it easy to do visual checks on the burner unit.

ENT, HIGH-PERFORMANCE HEATERS

CENTRIFUGAL DOWNSTREAM HEATERS

Brock's GUARDIAN® Series Centrifugal Downstream Heaters are available to match centrifugal fan models and offer BTU capacities of up to 5,000,000. This gives you the flexibility required to meet your grain conditioning needs for in-bin drying.



Heater models are available for use with liquid propane, propane vapor, or natural gas fuels and utilize gas-certified solenoid valves. Brock-supplied regulators are standard on liquid propane models.

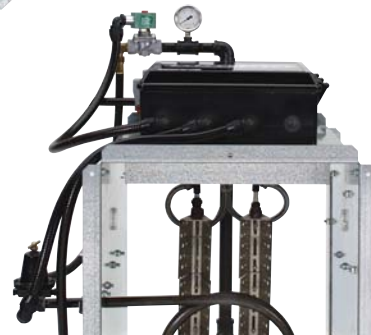
Brock's full flame-wall burner provides top fuel-saving performance along with even heat distribution. This design is the most efficient style of burner available. Stainless steel baffles are standard.



Liquid propane heater models include a **high-capacity internal vaporizer**. Vaporizer design features built-in flexibility to position the unit's coil for optimum performance.



Large **inspection door** provides maximum accessibility to make it easy to service burner and vaporizer unit. Convenient **sight ports** on both sides of the heater make it easy to do visual checks on burner unit operation.



Rodent-resistant conduit protects all exposed wiring, including ignition and flame circuit wires in the burner unit.

SPECIFIC CONTROLS, STANDARD BOX



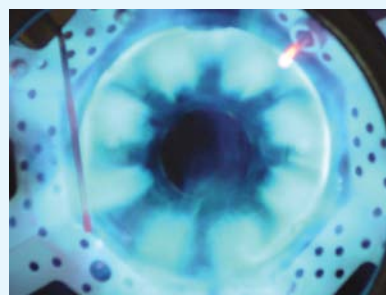
Brock's GUARDIAN® Series controls are specifically matched to each heater unit and feature industrial-grade water-tight switches and lights.

Made of durable polycarbonate material with a hinged translucent cover, the **control housing** is resistant to weather, dust and rodents.



Brock's heater controls use an industrial-design **ignition transformer**. **Terminal blocks** are provided for easy connection of external controls.

All Brock GUARDIAN Series Heaters incorporate a reliable **industrial flame rectification system**.



HEATER RATINGS

SPECIFICATIONS:

Axial Heaters

| Heater Model | Fuel Type | Capacity Range (BTU) |
|--------------|---------------------------|-----------------------|
| AX24-N/PV | Natural Gas/Propane Vapor | 800,000 - 2,200,000 |
| AX24-N/PV-LT | Natural Gas/Propane Vapor | 250,000 - 750,000 |
| AX24-LP | Liquid Propane | 800,000 - 2,200,000 |
| AX26-N/PV | Natural Gas/Propane Vapor | 1,000,000 - 2,600,000 |
| AX26-N/PV-LT | Natural Gas/Propane Vapor | 300,000 - 750,000 |
| AX26-LP | Liquid Propane | 1,000,000 - 2,600,000 |
| AX28-N/PV | Natural Gas/Propane Vapor | 1,100,000 - 3,000,000 |
| AX28-N/PV-LT | Natural Gas/Propane Vapor | 350,000 - 1,100,000 |
| AX28-LP | Liquid Propane | 1,100,000 - 3,000,000 |

Centrifugal Downstream Heaters

| Heater Model | Fuel Type | Capacity Range (BTU) |
|------------------|---------------------------|-----------------------|
| CDH2710-N/PV | Natural Gas/Propane Vapor | 1,200,000 - 2,100,000 |
| CDH2710-LP | Liquid Propane | 1,200,000 - 2,100,000 |
| CDH2715-N/PV | Natural Gas/Propane Vapor | 1,600,000 - 2,800,000 |
| CDH2715-LP | Liquid Propane | 1,600,000 - 2,800,000 |
| CDH2720-N/PV | Natural Gas/Propane Vapor | 1,750,000 - 3,100,000 |
| CDH2720-LP | Liquid Propane | 1,750,000 - 3,100,000 |
| CDH30-25,30-N/PV | Natural Gas/Propane Vapor | 2,300,000 - 4,000,000 |
| CDH30-25,30-LP | Liquid Propane | 2,300,000 - 4,000,000 |
| CDH33-40,50-N/PV | Natural Gas/Propane Vapor | 3,000,000 - 5,000,000 |
| CDH33-40,50-LP | Liquid Propane | 3,000,000 - 5,000,000 |



Brock Grain Systems

A Division of CTB, Inc.

Milford, IN • Kansas City, MO • Frankfort, IN

Phone: 574.658.4191 or +1.574.658.9323 (International)

Internet: www.brockgrain.com or www.ctbworld.com

E-Mail: brock@brockgrain.com